

# DIGITAL CUTTING SYSTEM

Best Choice for High-end Advertisers

Auto position system Conveyor table  
Partition absorption Imported motor  
Multi-tools for option

**RUK**

# COMPANY PROFILE

---

**Ningbo RUKING Electrical Technology Co., Ltd.,** one of the high-tech technology enterprises, which is a professional engaged in automation equipment, industrial automation parts and industrial intelligence, information, digital system complete scheme research and development, production, sales and service. Has won a number of national, provincial, municipal honors, was rated as a National High-tech Enterprise, Double-head Cutting System won the National First Set Award, Third Prize of Science and Technology of China Packaging Industry, Zhe Jiang Province Grade AA Contract Keeping and Credit First Company, Designated Strategic Service Provider of Zhejiang Clothing Innovation Service Complex, Ningbo RUKING Non-metallic Material Intelligent Cutting System Engineering Center, Fenghua District the First "Fenglu Talents" selected project and other honors. The company's R&D team is composed of doctors, masters and experts with decades of industry experience from well-know universities.

The company has set up a mechanical R&D center, a software R&D center, a control system R&D center and an AI vision R&D center, To break the long-term market and technology monopoly of European and American countries, to achieve domestic alternative imports. It has more than 100 invention patents, utility model software patents and software copyrights. The company has a large gantry numerical control machining center based on SZZN, high-precision five-axis CNC-MES digital precision factory, precision sheet metal factory, machine assembly factory. Covering the whole industrial chain from the raw material end to the product end, to realize 100% self-made rate of parts. We has fully implemented the ISO9001 quality management system, and the related products have passed the certification of CE and other domestic and foreign authorities. The company's products are widely used in the cutting of flexible materials and composite materials.

Also, in shoemaking, clothing, bags and handbags, cartons, advertising, leather, electronics, automobiles, high-speed rail, aerospace and other industries. Customers all over the country and overseas more than 80 countries and regions. We has established a perfect after-sales service system, with 26 outlets all over the country. In order to provide customers with all-round and efficient services, we has taken the lead in realizing the self-diagnosis service system of equipment health status.

---

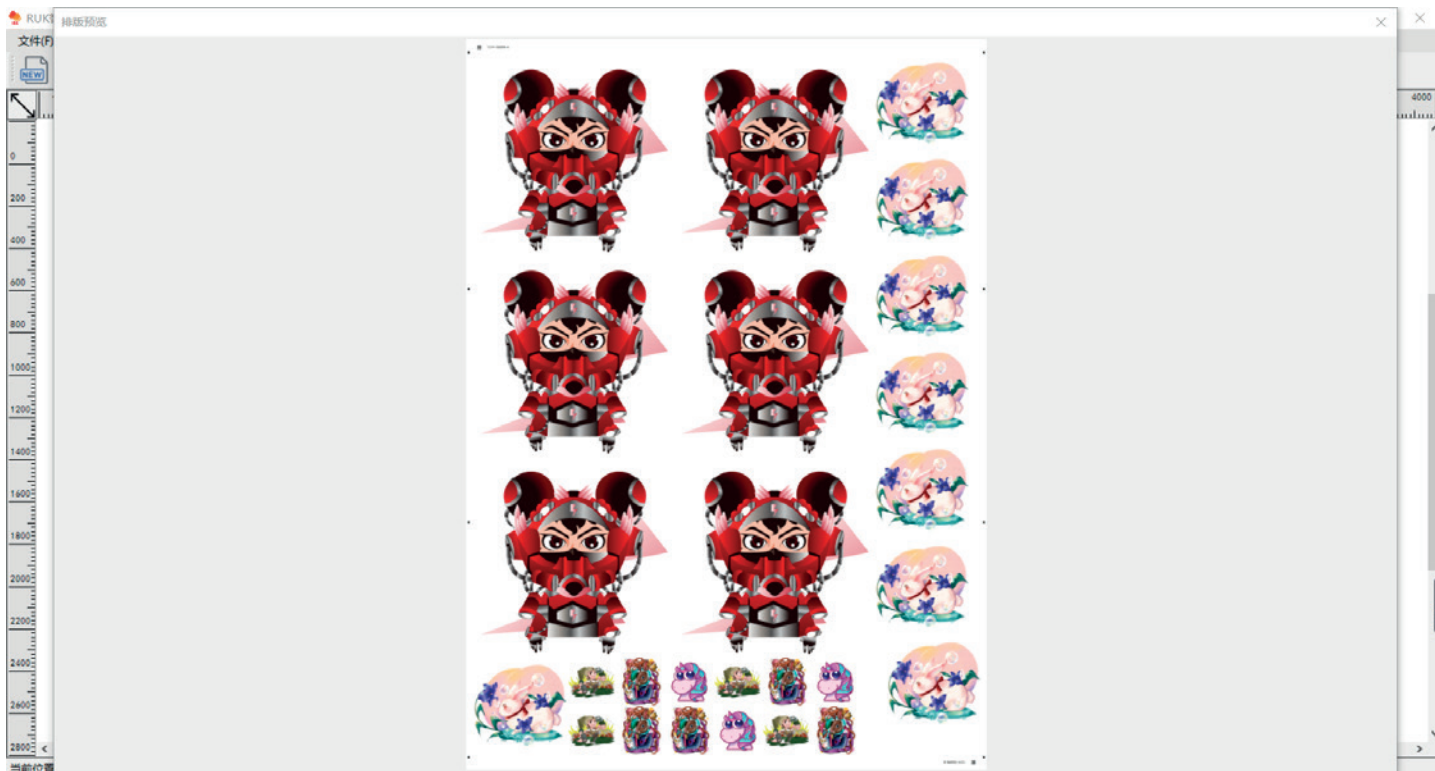
**CERTIFICATE OF CONFORMITY**



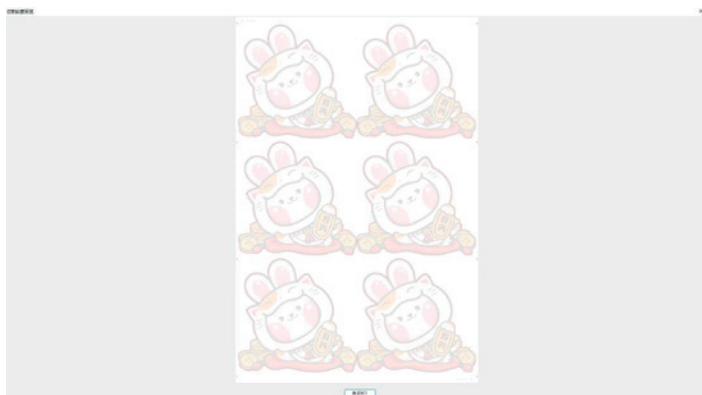


# SOFTWARE INTRODUCTION

## Auto typesetting and separation



## Automatic path extraction



## Automatic tool setting system

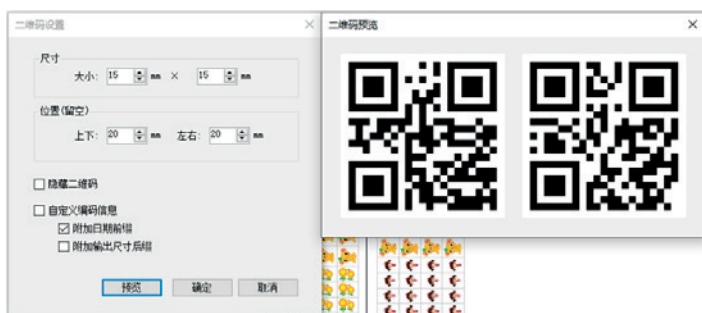
Restore the original cutting path after power failure

QR code scanning automatic cutting

Software supports different file formats such as HPGL/PLT/DXF



## Automatically generate Mark points and QR codes



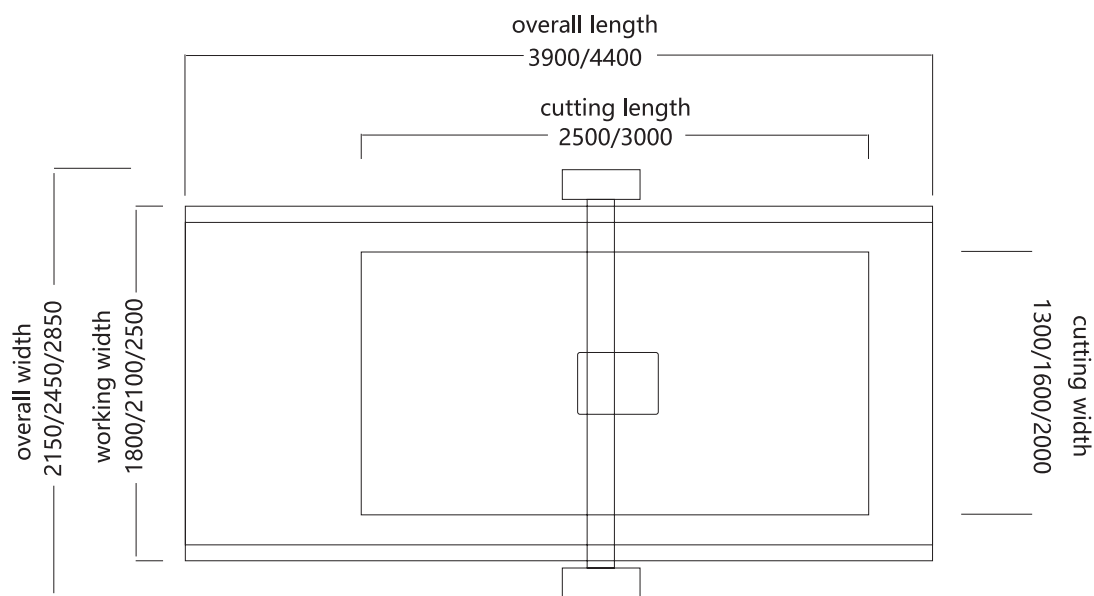
Compatible with multiple image formats such as TIFF/PDF/JPG/PNG



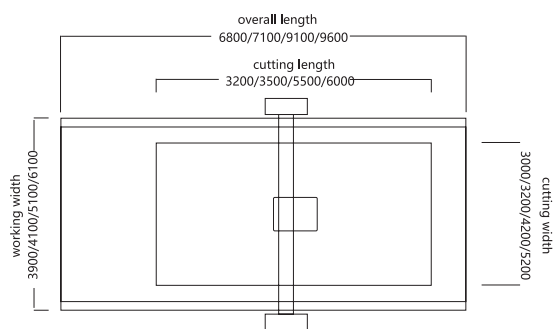
## Preset cutting mode

# OVERALL & WORKING AREA SIZE

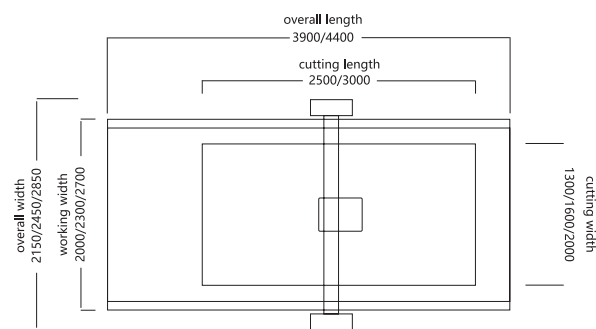
## MTC06



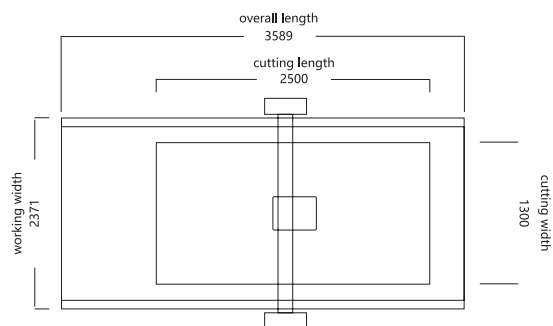
## MTC06-3232GR Series



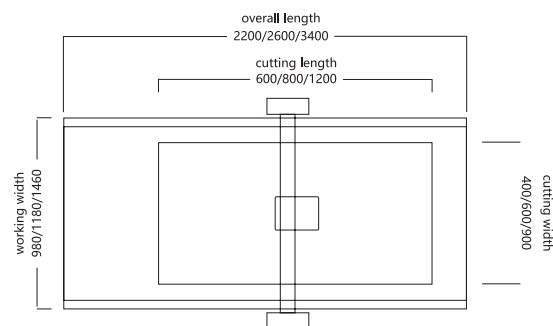
## MTC09



## MEC01



## MKC



# MTC06

CUTTING SYSTEM



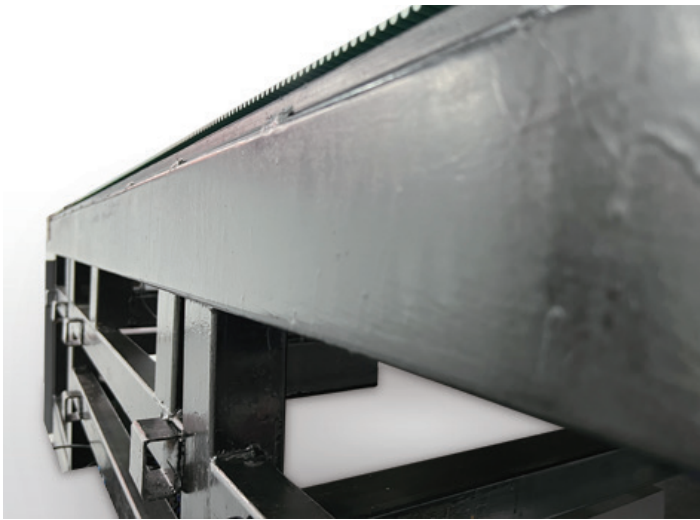
## TECHNICAL PARAMETER

Air Pump Power	7.5KW	7.5KW	9KW
Fixed Power	9.5KW	9.5KW	11KW
Effective Cutting Area	2500*1300mm	2500*1600mm	3000*2000mm
Overall Size	3900*2285*1350mm	3900*2585*1350mm	4400*2985*1350mm
Cutting Speed	300-1800mm/s (according to different materials)		
Cutting Thickness	≤ 50MM (according to different materials)		
Working Environment	Temperature: 0° -35° Humidity: 35%-80%		
Transmission System	High-end servo motor drive, imported linear guides, bearings		
Working Voltage/Power	AC 380V/220V±10%50HZ		
File System	Compatible with HPGL/PLT/DXF etc. Repeat accuracy ≤ 0.01mm Software resolution 0.025		



<b>Working Characteristics</b>	Can be connected to any CAD software, computer-aided design and cutting can be carried out at the same time
<b>Buffer Capacity</b>	One-time quick transfer sheet-fed cutting
<b>Transmission Port</b>	Standard network port
<b>Fixed Method</b>	Vacuum adsorption
<b>Operation Interface</b>	Touch Screen
<b>Feeding Method</b>	Imported crawler automatic feeding method (can be cut in unlimited length)
<b>Standard Tools</b>	High-speed oscillating tool, universal cutting tool, kiss-cut tool, CCD automatic positioning system, cursor
<b>Optional Tools</b>	Pen, V-CUT, creasing wheel, milling tool set, 50MM foam cut tool
<b>Cutting Material</b>	All kinds of corrugated cardboard, Yellow cardboard, Red cardboard, PVC board, Honeycomb board, PVC foam board, Acrylic, KT board, Aluminum-plastic board, Fiber midsole and rubber board, Thick foam, Car sticker, adhesive, Reflective film, Photo paper, Photo PVC, etc.





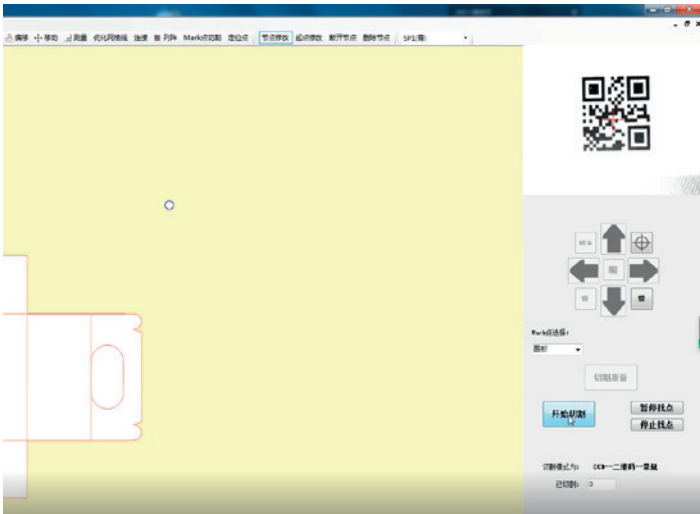
### ONE-PIECE MOLDED FRAME

The one-time processing and molding of the frame greatly improves the stability of the fuselage, greatly reduces the possibility of the machine losing the accuracy of the guide rail due to vibration, and the high-strength material makes the service life of the machine longer.



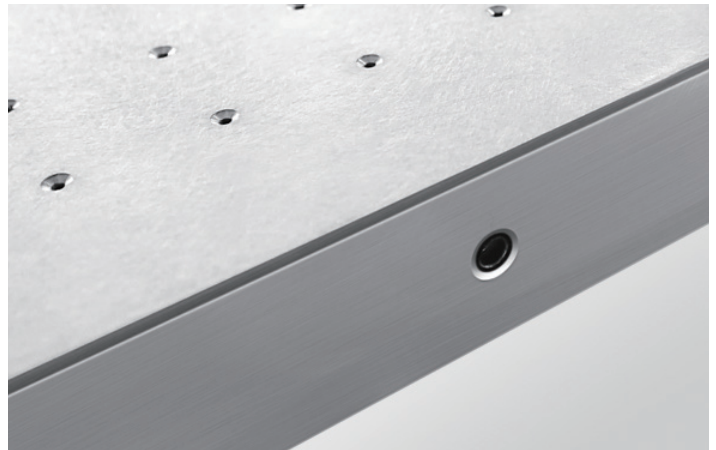
### CCD SMART POSITIONING SYSTEM

A high-definition CCD positioning camera imported from Germany is built into the machine, which can automatically complete accurate edge patrol cutting when dealing with various materials. With the real-time image analysis of the software system, the probability of error can be greatly reduced and the perfect cutting effect can be achieved.



### QR CODE EXTRACTING AUTOMATICALLY

By automatically scanning a QR code or bar code, the machine will quickly read the cutting file and perform the cutting automatically.



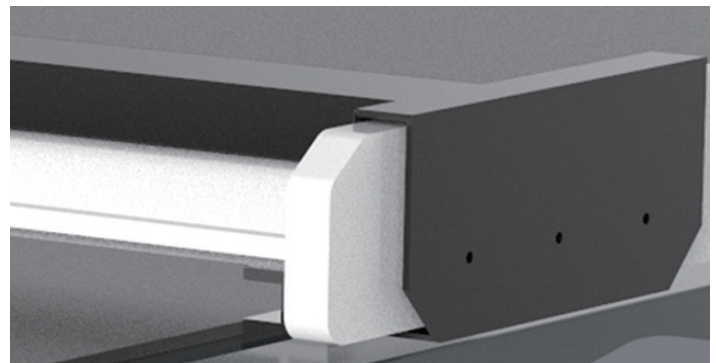
### HONEYCOMB-AL VAC-SORB PLATFORM

Using aviation-grade aluminum alloy materials, high-quality honeycomb aluminum plates create a vacuum adsorption platform that is not easy to deform, and a unique multi-contact design is convenient for adjustment.



### CONTINUOUS FEEDING SYSTEM

Equipped with a continuous feeding system for cutting wireless length coils and automatically corrects the offset during feeding to achieve zero cutting error.



### SAFETY ANTI-COLLISION SYSTEM

High sensitivity intelligent anti-collision system to ensure safe operation.





**EXTENDED PICKING AREA\***

It can be equipped with an extended material collecting area to allow cutting and receiving to be carried out at the same time, saving sorting time.

\*: indicates that the configuration part can be added optionally



**SORTING INDICATION FUNCTION\***

It is convenient for the collection and sorting of mixed multi order cutting, saving materials, small orders, and higher efficiency.

\*: indicates that the configuration part can be added optionally

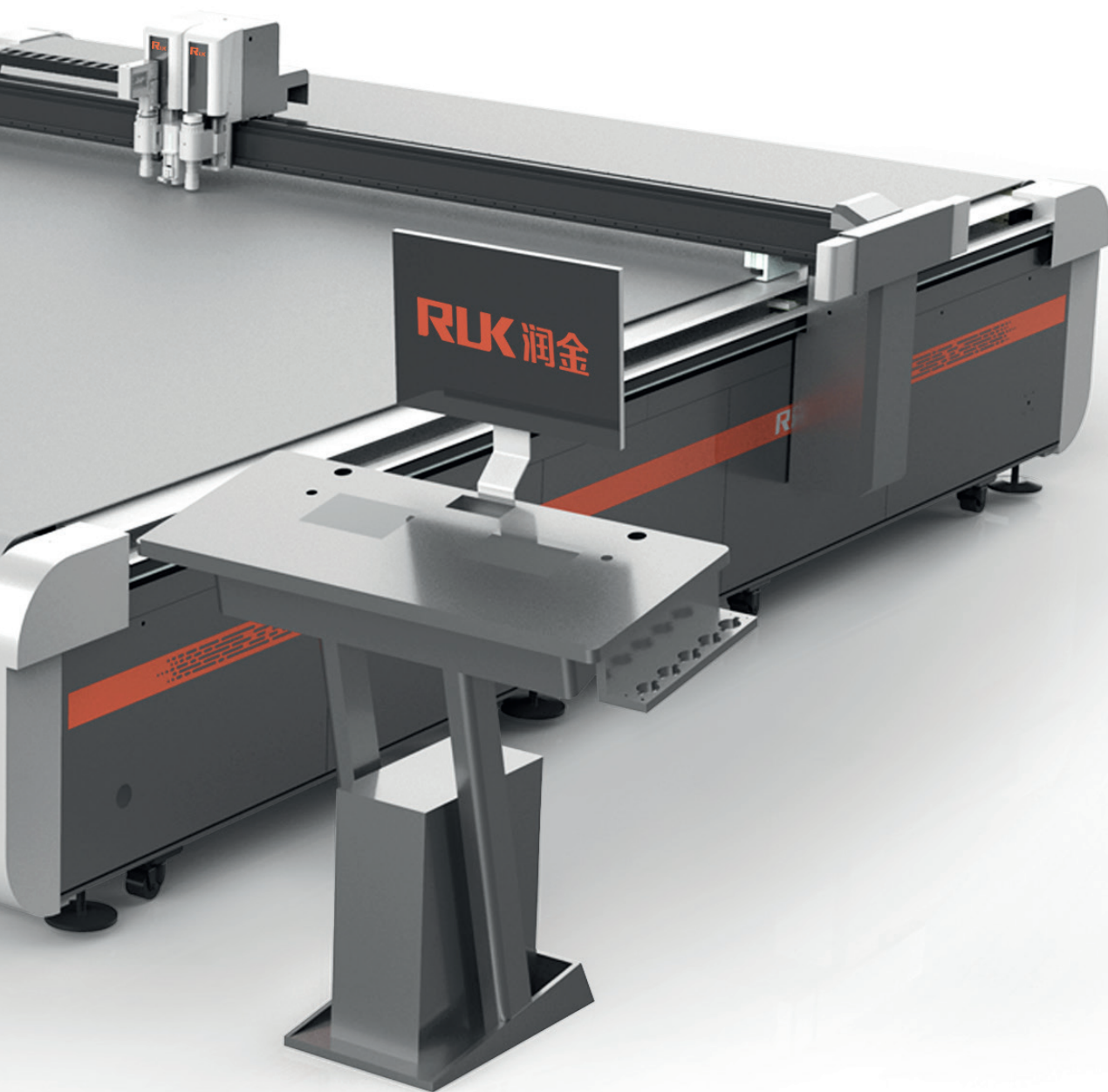
# MTC06-3232GR SERIES

CUTTING SYSTEM



## TECHNICAL PARAMETER

Machine Model	MTC06-3232GR	MTC06-3530GR	MTC06-5542GR	MTC06-6052GR
Air Pump Power	9KW	9KW	2*9KW	2*9KW
Fixed Power	14KW	14KW	23KW	23KW
Effective Cutting Area	3200*3200mm	3500*3000mm	5500*4200mm	6000*5200mm
Overall Size	6800*4100*1250mm	7100*3900*1250mm	9100*5100*1250mm	9600*6100*1250mm
Working Environment	Temperature: 0° -35° Humidity: 35%-80%			
Fixed Method	Vacuum adsorption			
Transmission Port	Standard network port			
Transmission System	High-end servo motor drive, linear guide rail, rack and pinion helical gear			
Operating Voltage/Power	AC 380V/220V±10%50HZ			



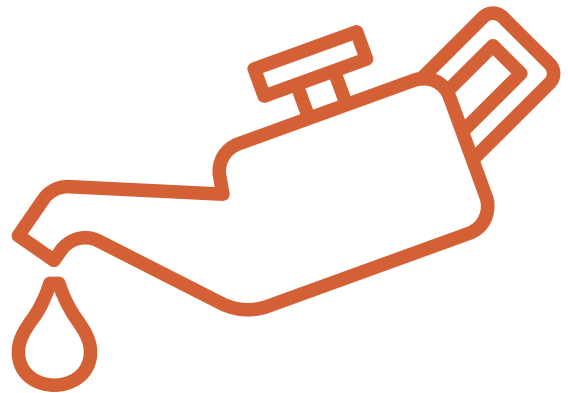
<b>File System</b>	HPGL/PLT/DXF/AI/EPS/TIF/PDF/JPG/XML/CUT repeatability $\leq 0.01\text{mm}$ software resolution 0.025
<b>Working Characteristics</b>	Can be connected to any CAD software, computer-aided design and cutting are carried out at the same time
<b>Buffer Capacity</b>	One-time fast transmission, interchangeable pages
<b>Cutting Speed</b>	90m/min (cut according to different materials)
<b>Cutting Thickness</b>	$\leq 50\text{MM}$ (according to different materials)
<b>Operation Interface</b>	Seven-inch color multi-language touch screen
<b>Feeding Method</b>	Imported crawler automatic feeding method (can be cut in unlimited length)
<b>Standard Tools</b>	High-speed oscillating tool, universal cutting tool, kiss-cut tool, CCD automatic positioning system, cursor
<b>Optional Tools</b>	Pen, V-CUT, creasing wheel, milling tool set, 50MM foam cut tool
<b>Cutting Material</b>	PVC TPU PU leather, felt belt, imitation leather, coated cloth, mesh rubber, woven fabric, knitted fabric, PET, corrugated, honeycomb panel, cardboard, knife scraping cloth, photo, soft film





## RACK AND PINION STRUCTURE

Rack and pinion structure: The rack and pinion structure with helical teeth has higher wear resistance to meet the customers' needs of higher precision and speed.



## AUTOMATIC LUBRICATION SYSTEM\*

It can reduce the wear of guide rails and sliders, continuously inject oil and lubricate them, protect the original physical accuracy, thus ensuring the machining accuracy and improve the overall service life of the machine.

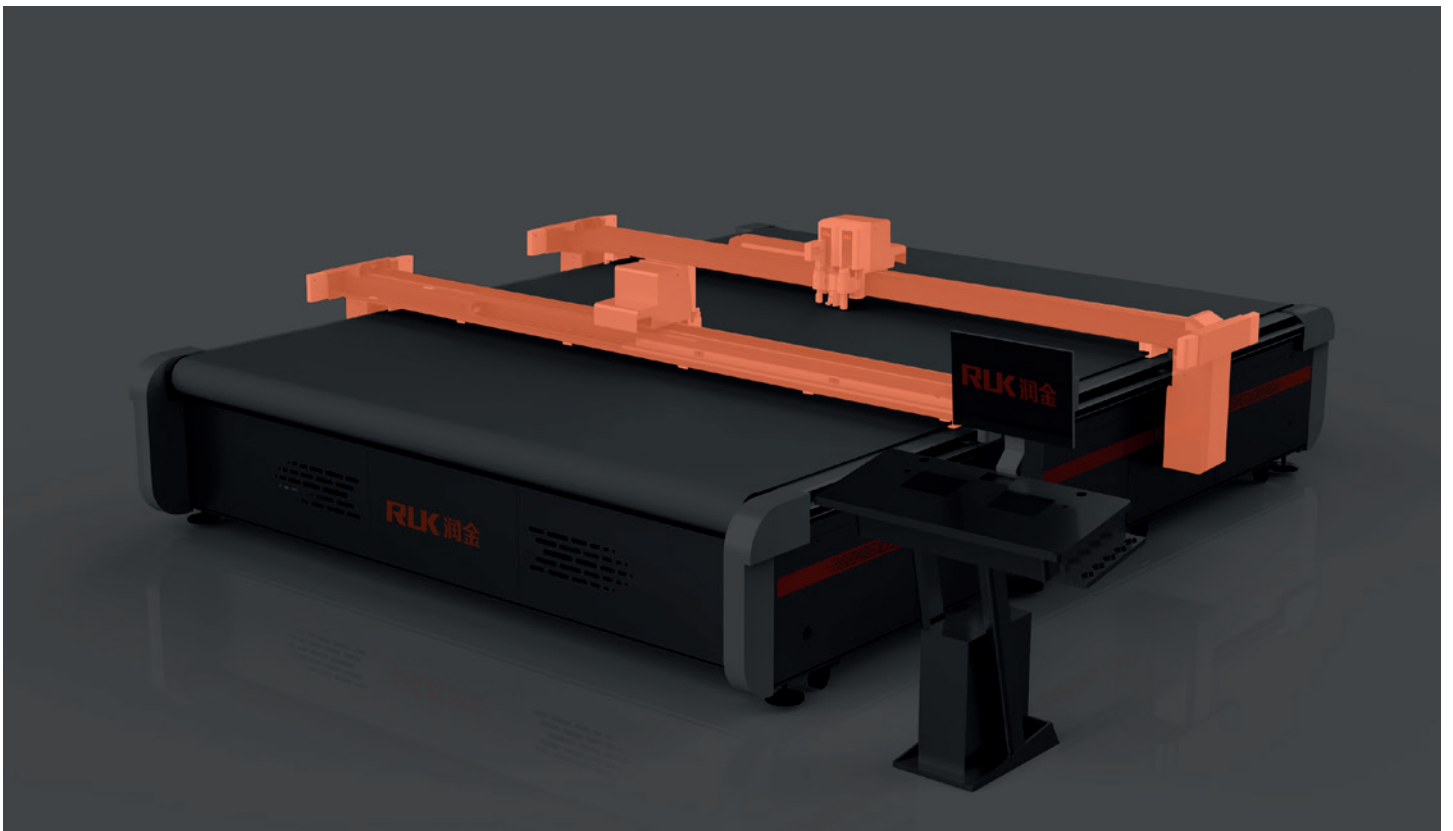
\*: indicates that the configuration part can be added optionally





## LARGE CUTTING FORMAT

Super large-format spray cloth, photo, oil canvas and other cutting, the material is not pulled, and the cutting is not deformed.



## DOUBLE BEAM STRUCTURE \*

Double beam structure, double work efficiency, at the same time can flexibly realize the use of single and double beam switching, to meet the same surface different cutting (asynchronous cutting).

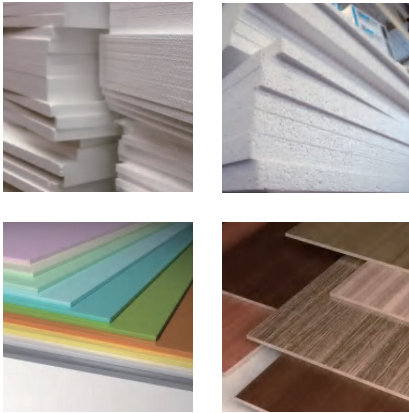
\*: indicates that the configuration part can be added optionally

# TOOLS' INTRODUCTION

## HIGH-SPEED OSCILLATING TOOL



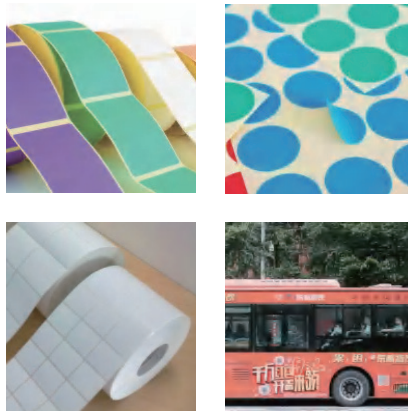
Suitable for cutting PVC board, KT board and medium and low density materials



## KISS CUT TOOL



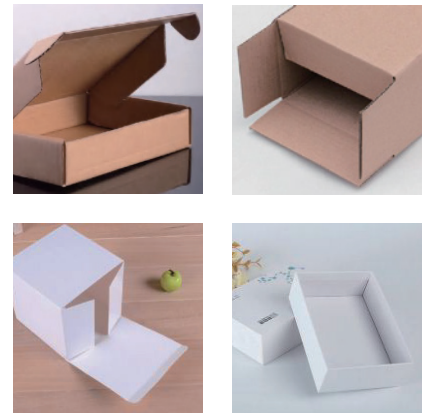
By adjusting the depth of the knife tip, only the upper half layer of the material can be cut through. It is mainly used in the cutting of nonadhesive materials



## CREASING WHEEL TOOL



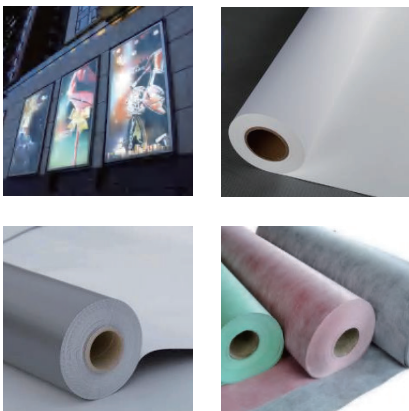
Crease processing of cardboard, PET board, corrugated board and honeycomb board with creasing wheel.



## UNIVERSAL CUTTING TOOL



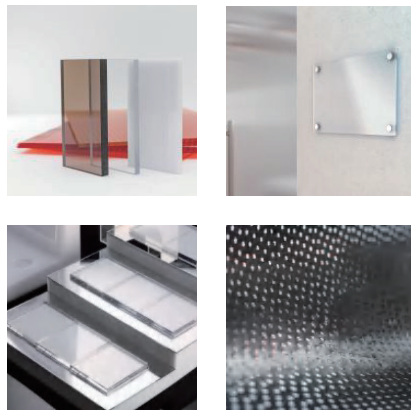
Suitable for cutting thin PVC below 5mm, all kinds of paper cards and light box cloth and other flexible coil fully cutting



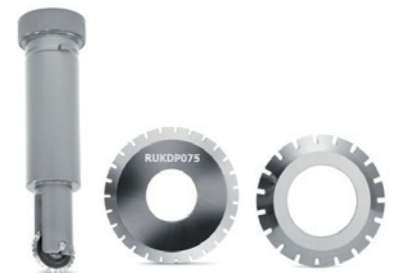
## MILLING TOOL



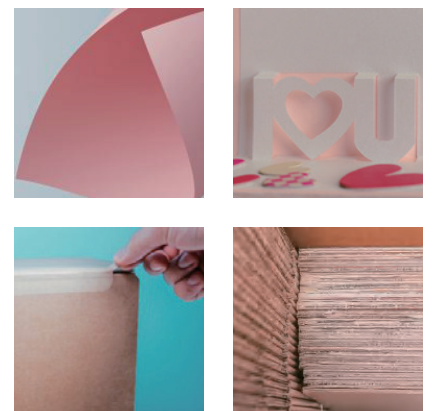
High-hardness materials are milled with high-speed water-cooled spindles. The layered cutting mode applied to hard materials such as acrylic aluminum composite panel and MDF within 20mm can make the product achieve 3D display effect.



## DASHED WHEEL CUTTER



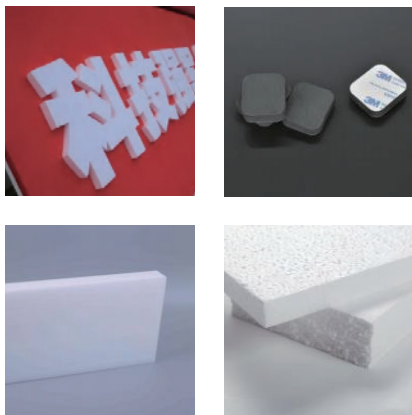
Cut in any direction by a point-breaking knife to form an easy-to-tear line.



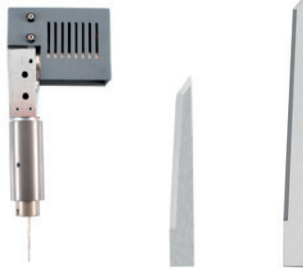
### PNEUMATIC OSCILLATING TOOL



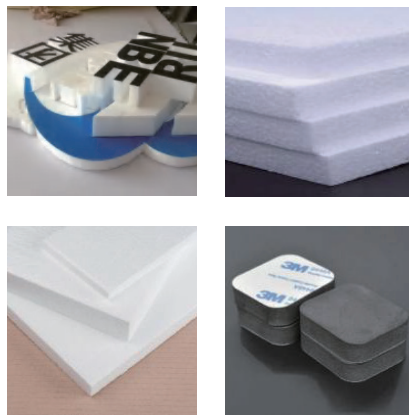
Powered by compressed air to cut foam, suitable for cutting foam, sponge and other materials of 5cm and below



### FOAM CUT TOOL



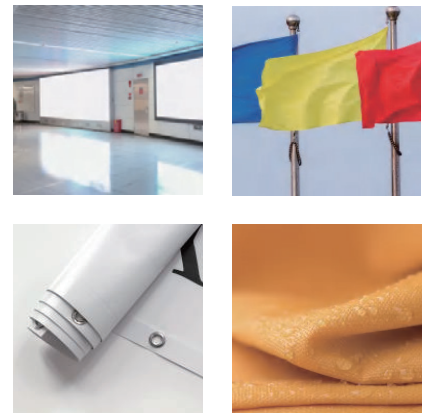
Uses the high-frequency vibration of the motor to drive the blade to cut the material completely. Mainly used in the production of foam materials for internal partitions of cartons and the production of foam characters in the advertising industry.



### GREAT DRIVING ROTARY TOOL



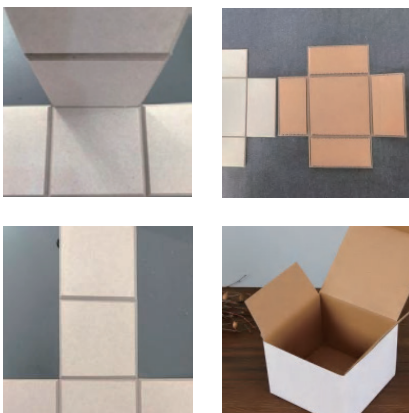
Imported motor, can be used for high-speed processing of various flexible materials such as banner cloth, clothing textile fabrics, etc.



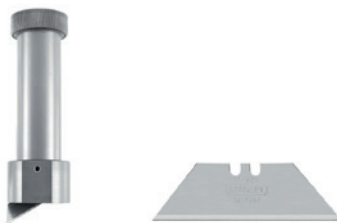
### V-CUT 1



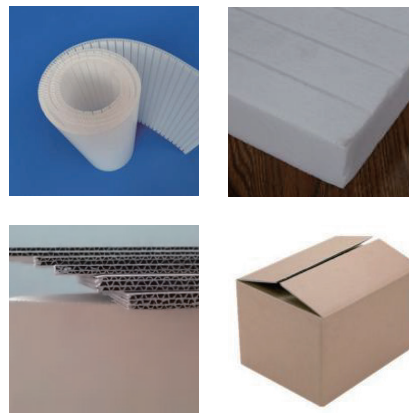
It is mainly ideal for grey board slotting, and can be flexibly slotted in multiple angles according to different needs



### V-CUT 2



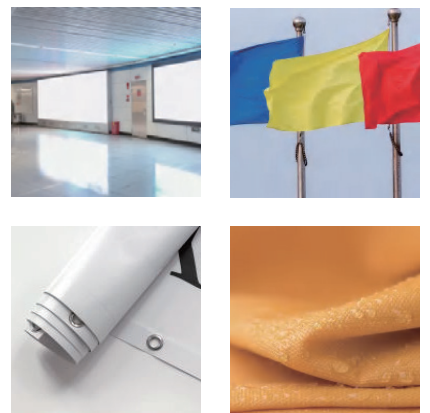
Prefer for grooving of medium hardness PVC board, corrugated board, honeycomb board and other materials.



### GEAR ROTARY TOOL



Imported motor, can be used for high-speed processing of various flexible materials such as banner cloth, clothing textile fabrics, etc.





# MTC09

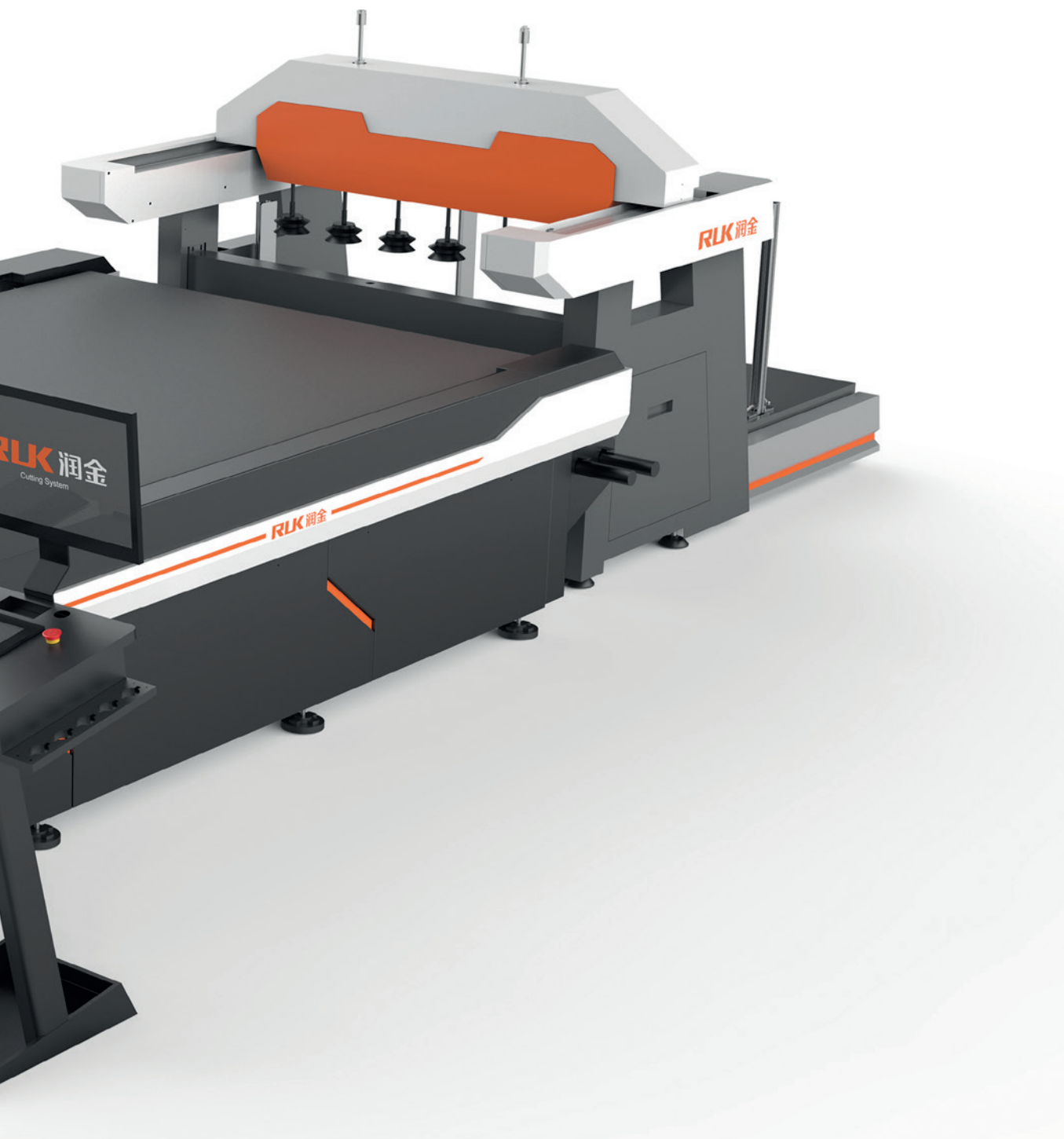
## CUTTING SYSTEM



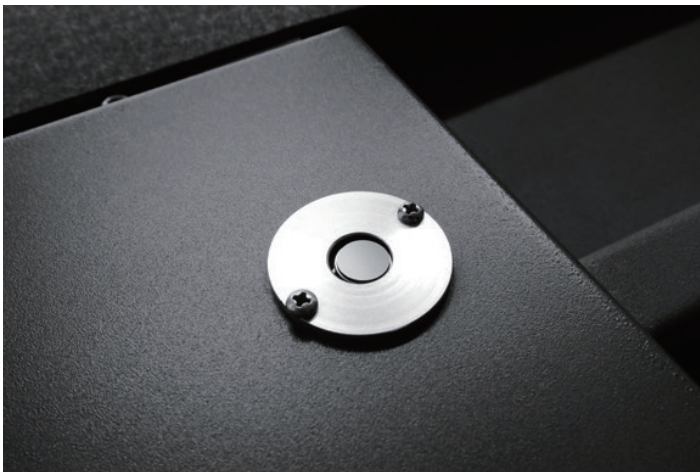
### TECHNICAL PARAMETER

Air Pump Power	7.5KW	7.5KW	7.5KW
Fixed Power	9.5KW	9.5KW	9.5KW
Effective Cutting Area	2500*1300mm	2500*1600mm	3000*2000mm
Overall Size	3900*2285*1350mm	3900*2585*1350mm	4400*2985*1350mm
Cutting Speed	300-1800mm/s(according to different materials)		
Cutting Thickness	≤ 50MM (according to different materials)		
Working Environment	Temperature: 0° -35° Humidity: 35%-80%		
Transmission System	Imported servo motor drive, linear guide, precision ball screw, bearing		
Working Voltage/Power	AC 380V/220V±10%50HZ		
File System	Compatible with HPGL/PLT/DXF etc. Repeat accuracy ≤ 0.01mm Software resolution 0.025		



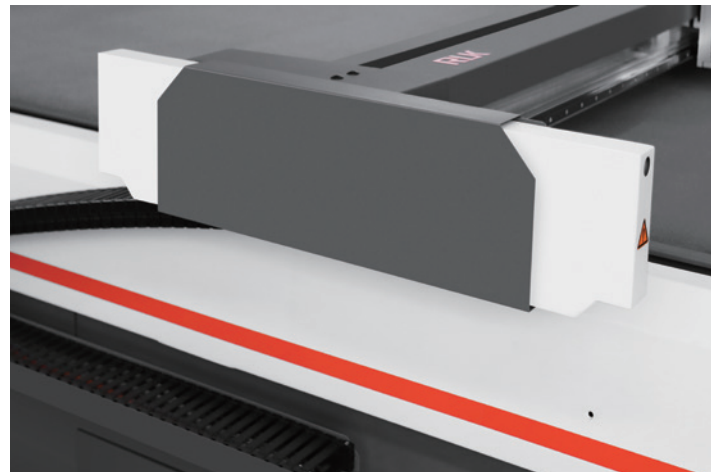


<b>Working Characteristics</b>	Can be connected to any CAD software, computer-aided design and cutting can be carried out at the same time
<b>Buffer Capacity</b>	One-time quick transfer sheet-fed cutting
<b>Transmission Port</b>	Standard network port
<b>Fixed Method</b>	Vacuum adsorption
<b>Operation Interface</b>	Seven-inch color multi-language touch screen
<b>Feeding Method</b>	Imported crawler automatic feeding method (can be cut in unlimited length)
<b>Standard Tools</b>	High-speed oscillating tool, universal cutting tool, kiss-cut tool, CCD automatic positioning system, cursor
<b>Optional Tools</b>	Pen, V-CUT, creasing wheel, milling tool set, 50MM foam cut tool
<b>Cutting Material</b>	All kinds of corrugated cardboard, Yellow cardboard, Ted cardboard, PVC board, Honeycomb board, PVC foam board, Acrylic, KT board, Aluminum-plastic board, Fiber mid-sole plate, Rubber board, Thick foam material, etc.



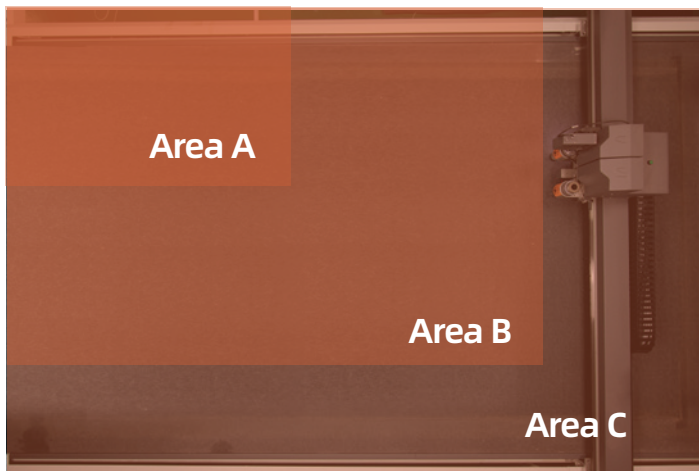
### **AUTOMATIC TOOL DEPTH RECOGNITION**

A set of precision instrument sensing system is also designed under the adsorption platform. When the tool tip reaches the sensing area, the machine will receive a signal to obtain the depth of the tool tip.



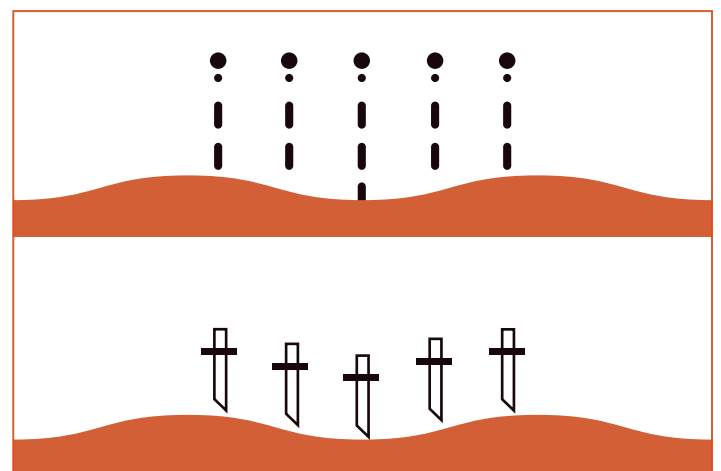
### **SAFETY ANTI-COLLISION SYSTEM**

Equipped with a safety device based on infrared sensors to ensure the safety of operators while the machine is running at high speeds.



### **INTELLIGENT PARTITION SUCTION STRUCTURE**

Only turn on the suction function in the working area, save energy consumption, and achieve the maximum suction effect with the least amount of electricity.



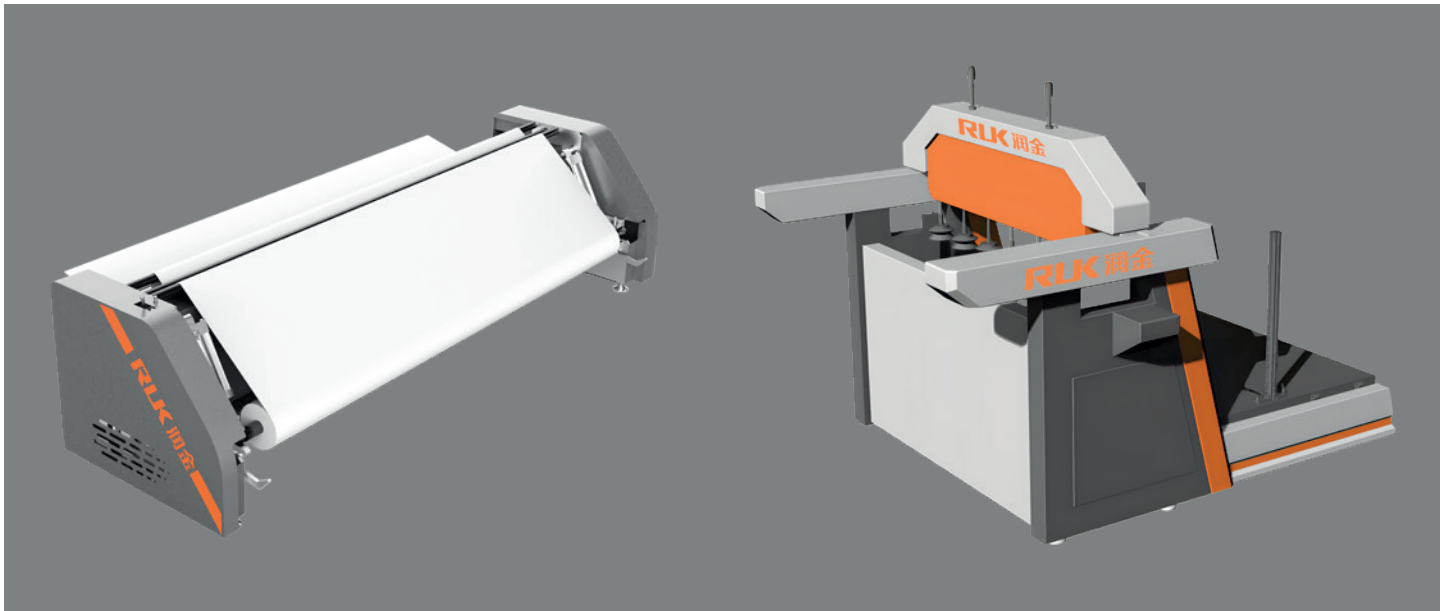
### **FLATNESS ADAPTIVE TOOL DEPTH FUNCTION**

Adaptive knife depth according to platform flatness, software corrects the plane in real time to ensure high-quality cutting results.



### **AUTOMATIC FEEDING SYSTEM**

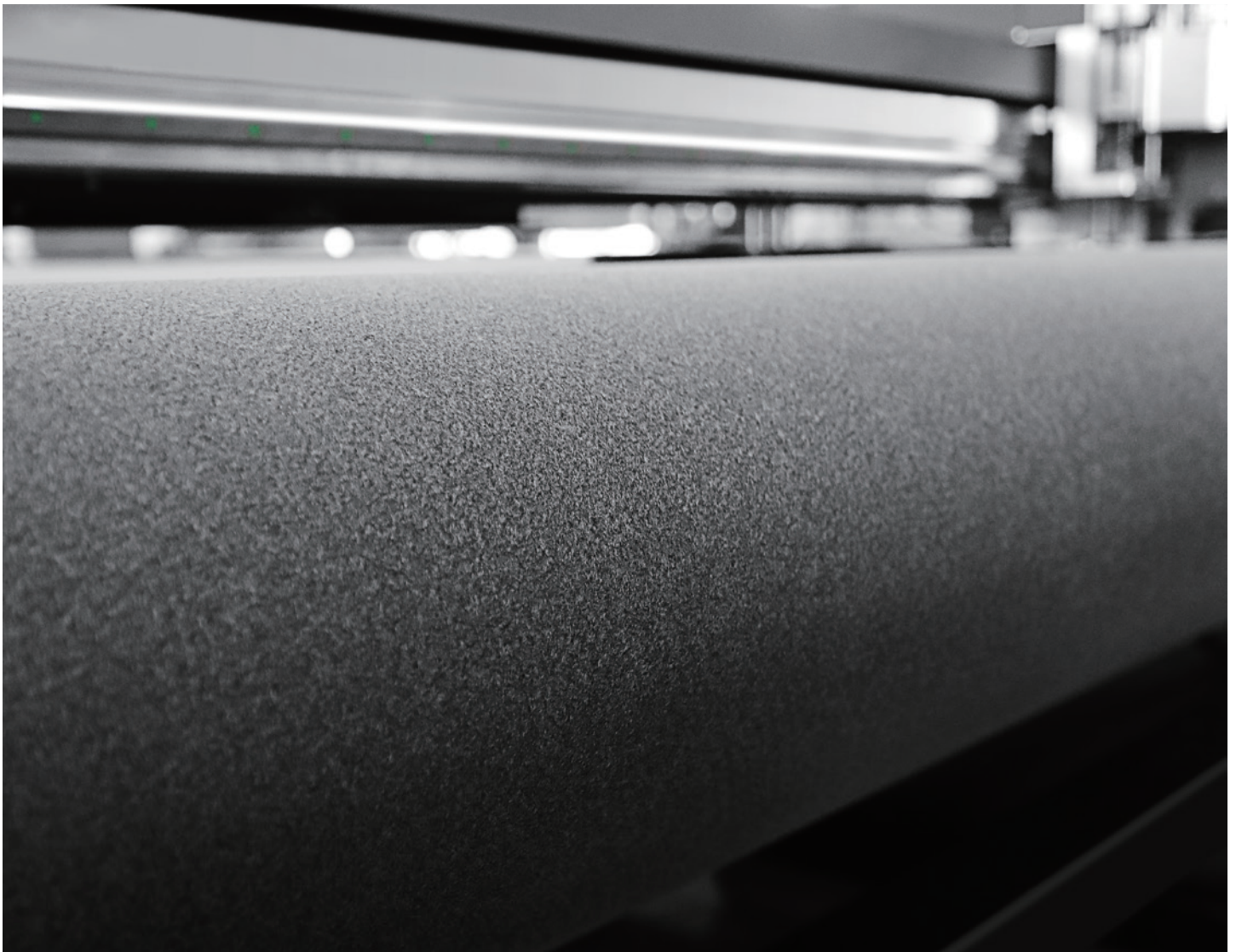
According to actual needs, it can be equipped with two automatic feeding systems, coil and plate, to achieve continuous cutting.



### **AUTOMATIC FEEDING SYSTEM\***

According to actual needs, it can be equipped with two automatic feeding systems, coil and plate, to achieve continuous cutting.

\*: indicates that the configuration part can be added optionally



### **IMPORTED FELT**

Use wool felt imported from Italy, which is more durable.



# MEC01

CUTTING SYSTEM



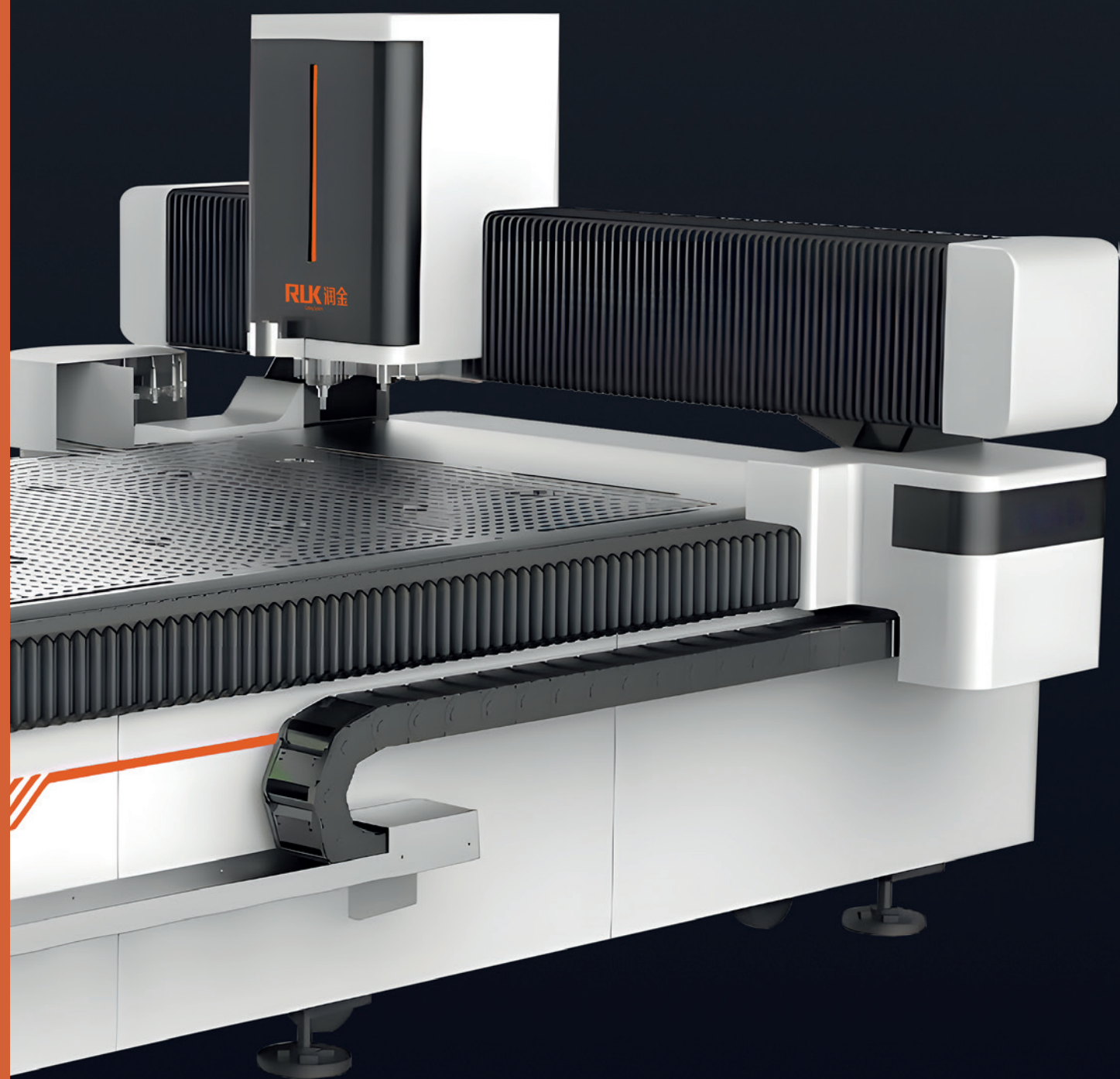
## TECHNICAL PARAMETER

Model	MEC01-2513
Overall Size	3589*2371*1640mm
Pump Power	7.5KW
Engraving Speed	400mm-1200mm/s (According to different materials)
Engraving Thickness	≤ 50mm
Operating Size	2500mm*1300mm*120mm
Control System	AF+ Inovance Servo





Driving System	High-end Servo Motor, Imported Straight Rail,Rack and pinion, High-precious Ball Screw
Spindle Motor	5.5kw Water-cooled Spindle, with automatic tool change function
Equipped Tools	High-speed Oscillating Tool, CCD positioning system
Fixed Method	Vacuum adsorption, Clamping
Voltage/Power	AC 380V/220V±10% 50HZ
Application Industry	Acrylic, PVC board, High-density board, bi-color board, Advertising board, KT board, Signboard

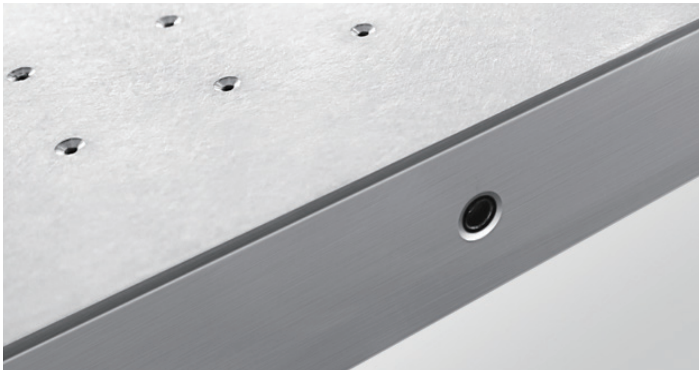






### **RACK AND PINION STRUCTURE**

The rack and pinion structure with helical teeth has higher wear resistance to meet the customers' needs of higher precision and speed.



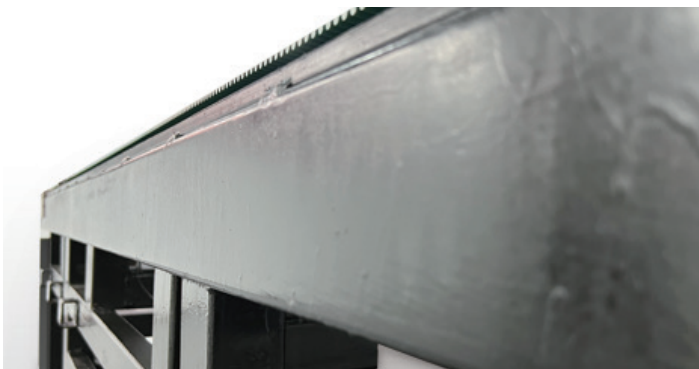
### **DUAL-FUNCTION TABLE SURFACE OF ADSORPTION AND CLAMPING**

PVC and aluminum alloy pressing groove can not only strongly adsorb materials of different areas, but also can be clamped, with manual valve control.



### **CCD VISUAL POSITIONING SYSTEM**

Automatic and precise cutting for different materials, high precision and reduction of errors.



### **ONE-TIME MOLDING FRAME**

Strong rigidity, stability, to ensure continuous operation of high precision.



### **AUTOMATIC TOOL CHANGE FUNCTION**

No manual, shorten the time of changing tools, improve productivity and machining accuracy.

# MKC

## CUTTING SYSTEM



### TECHNICAL PARAMETER

Machine Type	MKC-0604	MKC-0806	MKC-1209	MKC-0604L	MKC-0806L	MKC-1209L
Air Pump Power	2.2kw		4.4kw	2.2kw		4.4kw
Fixed Power	5.5KW	5.5KW	9KW	5.5KW	5.5KW	9KW
Effective Cutting Area (mm)	600*400	800*600	1200*900	600*400	800*600	1200*900
Overall Size (mm)	3000*980*1270	3600*1180*1270	4700*1460*1270	3000*980*1270	3600*1180*1270	4700*1460*1270
Working Characteristics	Can be connected to any CAD software, computer-aided design and cutting can be carried out at the same time.					
Cutting Speed	300-1200mm/s					
Cutting Thickness	≤ 2MM (according to different cutting materials)			≤ 10MM (according to different cutting materials)		
Cutting Material	Self-adhesive, Cardboard, PP paper, Labels, etc.			Self-adhesive, cardboard, PP paper, labels, all kinds of corrugated cardboard, yellow thick cardboard, red cardboard, honeycomb board, etc		
Standard Tools	Pen, Pressure wheel, Common knife, Figure king knife, CCD positioning			Pen, pressure wheel, ordinary knife, Tuwang knife, CCD positioning, small vibrating knife		
Feeding Method	Standard automatic feeding					





Fixed Method	Vacuum adsorption (with back blowing)
Repeatability	$\leq 0.01\text{mm}$
Software Resolution	0.025
Transmission Port	Standard network port
Buffer Capacity	One-time quick transfer sheet-fed cutting
File System	HPGL Compatible Format
Operation Interface	Touch screen
Transmission System	High-end servo motor drive and imported linear guide
Working Voltage/Power	AC 220V/380V $\pm$ 10% 50HZ
Working Environment	Temperature: 0° ~ 35° Humidity: 35% ~ 80%

# AUTOMATIC DIGITAL PRINTING DIE-CUTTING MACHINE

## INTRODUCE

The MKC series adopts an integrated loading and unloading structure, which realizes feeding, cutting, and receiving at one time, which greatly saves labor costs, improves work efficiency, and realizes fast delivery in sales and production. It's equipped with a variety of different tools to realize application cutting of different materials. And there is no need to make a die, which saves the time and cost of making a die.

## FUNCTION AND APPLICATION INDUSTRY

All kinds of Corrugated Cardboard, Plastic Corrugated Board, Yellow Cardboard, Red Cardboard, White Cardboard, Gray Cardboard, PVC Board, Foam Board, Eva Board, Kt Board, Stickers, Gaskets, Etc.

## MKC STATIC COUNTERTOP



Multiple options, static countertops



## PRODUCT ADVANTAGES

- Equipped with a high-definition CCD camera to realize automatic and precise positioning of materials, with high precision and reduced errors.
- The overall structure is integrated, and the operation is more stable.
- Using Taiwan guide rail, with higher precision.
- Intelligent layered adsorption makes paging easier and achieves zero error in single sheet feeding.
- One-key recognition of QR codes, which can realize mixed cutting of various papers.
- Equipped with a variety of different tools to achieve application cutting of different materials.

## TOOL INTRODUCTION



### CREASING WHEEL TOOL

According to the creasing wheel tool developed by the special industry, the indentation is clear, easy to break, and the pressure can reach 4 kg.

(Applicable to Corrugated, Corrugated, PVC, Cardboard, etc.)

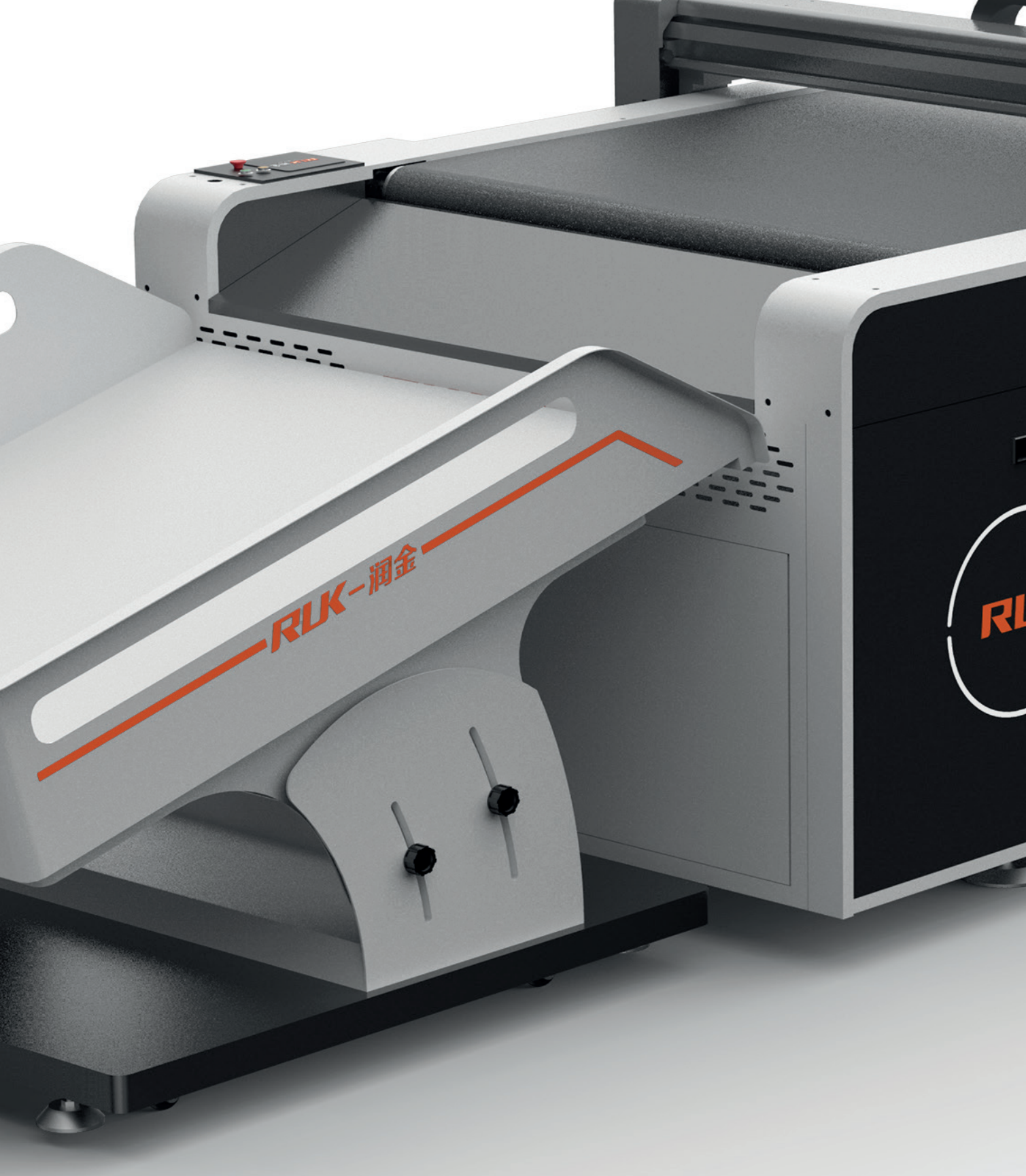


### GRAPHTEC BLADE

Realize rapid cutting of materials, the choice of customers with high precision requirements.

(Applicable to: Vinyl Materials, Stickers, Car Stickers, Reflective Film, Cardboard, etc.)





#### UNIVERSAL CUTTING TOOL

Satisfying the cutting of materials with a certain thickness, quick replacement and smoother cutting.

(Applicable to: Gray Cardboard, Labels, etc.)



#### OSCILLATING TOOL

The material is cut through the high-frequency vibration of the motor. It is equipped with different angle blades to meet the cutting of different materials. The maximum cutting thickness is 6mm.

(Applicable to: Corrugated, Corrugated Corrugated, Cardboard, Honeycomb Panels, etc.)







[www.ruk-tech.eu](http://www.ruk-tech.eu)  
[info@ruk-tech.eu](mailto:info@ruk-tech.eu)



### **Having 24 hours**

online service at anytime and anywhere.



Having professionals in specific areas who can help you install the machine, for overseas machines.



Having life-long technology support services, and software programs are upgraded for free for life.